

SPS 12500

PALFINGER

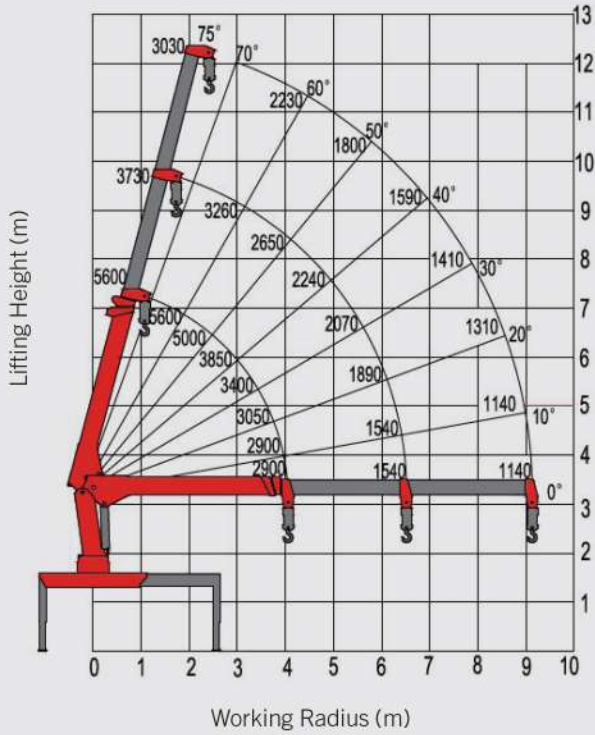
LIFETIME EXCELLENCE

PALFINGER ASIA PACIFIC
STIFF BOOM CRANES

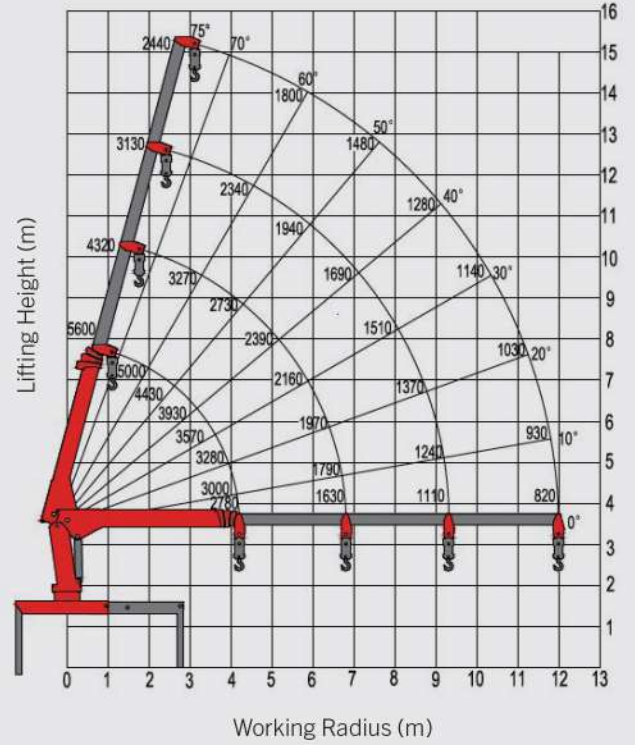


SPS 12500

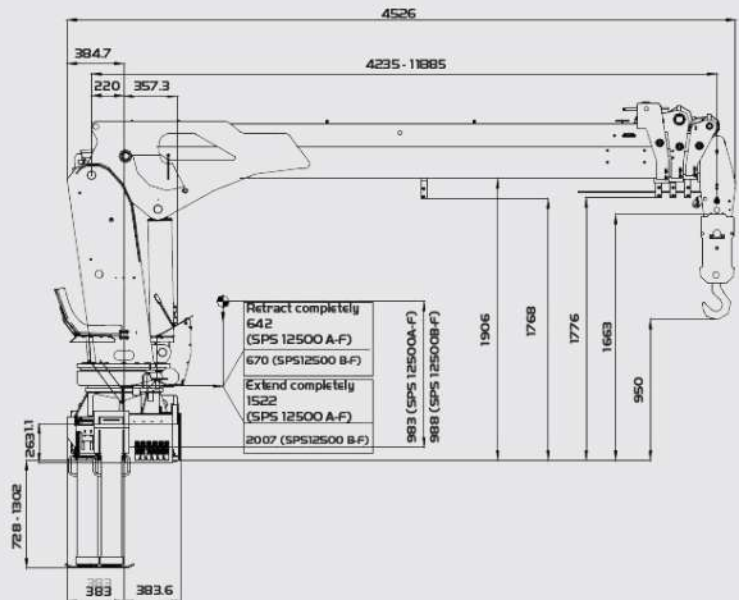
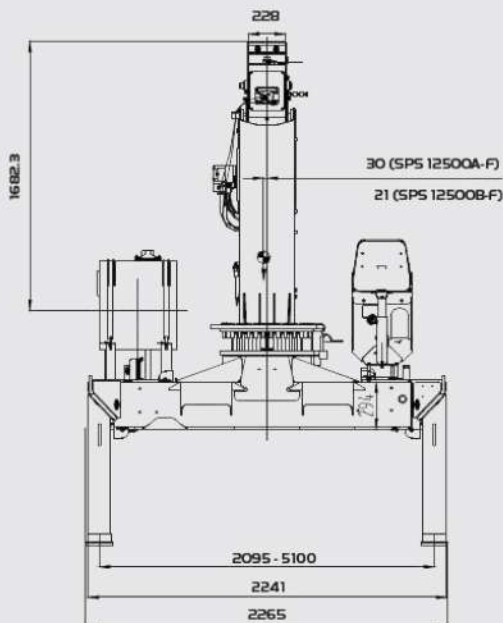
A (3 BOOMS)



B (4 BOOMS)



DIMENSIONS



All dimensions are in mm

Diagrams may include optional configurations

LIFTING CAPACITY

| SPS 12500 A | | | |
|------------------------|-------------|-------|-------|
| Working radius | Boom length | | |
| | 4.2 m | 6.7 m | 9.3 m |
| 2 m | 5600 | 4390 | |
| 2.5 m | 5000 | 3730 | 3490 |
| 3 m | 3850 | 3260 | 3030 |
| 3.5 m | 3400 | 2920 | 2700 |
| 4 m | | 2650 | 2440 |
| 4.5 m | | 2430 | 2230 |
| 5 m | | 2240 | 2060 |
| 5.5 m | | 2070 | 1920 |
| 6 m | | 1890 | 1800 |
| 6.5 m | | 1540 | 1690 |
| 7 m | | | 1590 |
| 7.5 m | | | 1500 |
| 8 m | | | 1410 |
| 8.5 m | | | 1310 |
| 9 m | | | 1140 |
| Recommended Rope lines | 4 | 4 | 2 |

| SPS 12500 B | | | | |
|------------------------|-------------|-------|-------|--------|
| Working radius | Boom length | | | |
| | 4.2 m | 6.8 m | 9.3 m | 11.9 m |
| 2 m | 5600 | | | |
| 2.2 m | 5000 | 4350 | | |
| 2.5 m | 4590 | 3960 | 3700 | |
| 3 m | 4050 | 3460 | 3210 | |
| 3.5 m | 3600 | 3090 | 2850 | 2720 |
| 4 m | 2930 | 2800 | 2570 | 2440 |
| 4.5 m | | 2570 | 2350 | 2230 |
| 5 m | | 2370 | 2160 | 2050 |
| 5.5 m | | 2180 | 2010 | 1900 |
| 6 m | | 2000 | 1880 | 1770 |
| 6.5 m | | 1720 | 1760 | 1670 |
| 7 m | | | 1660 | 1570 |
| 7.5 m | | | 1560 | 1490 |
| 8 m | | | 1470 | 1410 |
| 8.5 m | | | 1360 | 1340 |
| 9 m | | | 1210 | 1280 |
| 9.5 m | | | | 1220 |
| 10 m | | | | 1160 |
| 10.5 m | | | | 1100 |
| 11 m | | | | 1030 |
| 11.6 m | | | | 930 |
| Recommended Rope lines | 4 | 4 | 4 | 2 |



- Longer boom variant for wider working areas and lifting height
- Strong lifting performance
- 2 working lights with 2m cable, easily positioned to suit end-users' preference¹
- Integrated oil tank providing ease of mounting
- Lower seat (on base) and hydraulic stabilizer¹ for operation comfort
- Overload protection system¹
- High Density (HD) Paint system provides better resale value retention and attractive aesthetics.
- Manufactured with European quality processes to ensure safety and reliability
- Suitable for installation on 2 axles trucks

1 - optional

TECHNICAL SPECIFICATIONS

| Model | | SPS 12500 A-F | SPS 12500 B-F |
|---------------------------|----------|---------------|---------------|
| Max. lifting moment | mt | 12.5 | 12.6 |
| Max. lifting capacity | kg/m | 5000/2.5 | 5000/2.2 |
| Number of booms | sections | 3 | 4 |
| Max. hydraulic outreach | m | 9.0 | 11.6 |
| Max. lifting angle | ° | 75 | 75 |
| Slewing angle | ° | Endless | Endless |
| Stabilizer spread (std.) | mm | 5100 | 5100 |
| Operating pressure | MPa | 23/25 | 23/25 |
| Recommended pump capacity | L/min | 55 | 55 |
| Oil tank capacity | L | 100 | 100 |
| Crane Weight | kg | 2260 | 2270 |



LIFETIME EXCELLENCE

PALFINGER LOADER CRANES ARE CONVINCING DUE TO THEIR SUPERIOR LIFE-CYCLE PERFORMANCE. THEY ARE THE MOST ECONOMICAL AND ALSO THE MOST RELIABLE OVER THE ENTIRE PRODUCT LIFE. FROM SOLUTION FINDING TO RE-SALE.

BETTER
SOLUTIONS

BETTER
EFFICIENCY

BETTER
ERGONOMICS

HIGHER VALUE
RETENTION



HIGHER
AVAILABILITY

HIGHER
SERVICEABILITY

BETTER
ECOLOGY

MORE
RELIABILITY

For further information please visit: www.palfinger.com/thebrand



PT. FNF Trans Niaga

Rukan Sentra Pemuda No. 20 Lt. 3
Jl. Pemuda Kav. 61, Rawamangun, Jakarta Timur 13220
Email : marketing@fnftransniaga.com
www.craneindonesia.com | www.fnftransniaga.com

